


# HYDRA KOOL



## 2019 PRICE LIST



 786-600-4687

TOLL FREE: 844-218-8477

FAX: 786-661-4100

 [MVPGROUPCORP.COM](http://MVPGROUPCORP.COM)

 [SALES@MVPGROUPCORP.COM](mailto:SALES@MVPGROUPCORP.COM)



Printed January 2019

# HYDRA-KOOL 2019 PRICE LIST

## Bakery Cases - Forced Air KBD-CG Series



- Tilt forward curved front tempered glass
- LED lighting all shelves
- Rear sliding access doors
- Tempered glass rear sliding doors
- Digital controller
- Anti-condensation system for front glass
- Voltage : 115/60/1  
*(220/50Hz Available as option)*

<b>KBD-CG-40-S*</b> \$13,860	<b>KBD-CG-50-S</b> \$14,810	<b>KBD-CG-60-S</b> \$15,670	<b>KBD-CG-80-S</b> \$17,160
<b>KBD-CG-40-R</b> \$12,430	<b>KBD-CG-50-R</b> \$13,240	<b>KBD-CG-60-R</b> \$13,820	<b>KBD-CG-80-R</b> \$15,450
<b>KBD-CG-40-D*</b> \$9,240	<b>KBD-CG-50-D*</b> \$9,690	<b>KBD-CG-60-D*</b> \$10,270	<b>KBD-CG-80-D*</b> \$11,790

All remote cases come without a cord set or plug



\* NEMA-5-15P



NEMA-5-

## Bakery Cases - Forced Air KBD-FG Series



- Tilt forward flat front tempered glass
- LED lighting all shelves
- Rear sliding access doors
- Tempered glass rear sliding doors
- Digital controller
- Anti-condensation system for front glass
- Voltage : 115/60/1  
*(220/50Hz Available as option)*

<b>KBD-FG-40-S*</b> \$14,640	<b>KBD-FG-50-S</b> \$15,530	<b>KBD-FG-60-S</b> \$16,510	<b>KBD-FG-80-S</b> \$17,990
<b>KBD-FG-40-R</b> \$12,980	<b>KBD-FG-50-R</b> \$13,890	<b>KBD-FG-60-R</b> \$14,450	<b>KBD-FG-80-R</b> \$16,380
<b>KBD-FG-40-D*</b> \$9,540	<b>KBD-FG-50-D*</b> \$9,970	<b>KBD-FG-60-D*</b> \$10,580	<b>KBD-FG-80-D*</b> \$13,000

All remote cases come without a cord set or plug



\* NEMA-5-15P



NEMA-5-20P

## Open Merchandisers High Profile - KGH-OF Series



- High density CFC-Free foamed ends-superior insulation
- LED lighting in canopy & under all shelves
- Easy pull-out condensation unit, control panel & evap pan
- Standard pull-down night shade
- Digital controller
- Voltage : 30-40-50, 100 (2 circuits)  
Models 115/60/1
- Voltage : 60-80 Models 230/60/1  
*(220/50Hz Available as option)*

<b>KGH-OF-30-S</b> \$13,580	<b>KGH-OF-40-S</b> \$15,160	<b>KGH-OF-50-S</b> \$15,960	<b>KGH-OF-60-S</b> \$17,510
<b>KGH-OF-80-S</b> \$21,710	<b>KGH-OF-100-S</b> \$30,650		
<b>KGH-OF-30-R</b> \$11,670	<b>KGH-OF-40-R</b> \$12,700	<b>KGH-OF-50-R</b> \$13,100	<b>KGH-OF-60-R</b> \$15,110
<b>KGH-OF-80-R</b> \$17,430	<b>KGH-OF-100-R</b> \$23,170		

All cases come without a cord set or plug

## Open Merchandisers High Profile - KGH-ES Series



- High density CFC-Free foamed ends-superior insulation
- LED lighting in canopy & under all shelves
- Easy pull-out condensation unit, control panel & evap pan
- Electrically operated security shutter
- Digital controller
- Voltage : 30-40-50, 100 (2 circuits)  
Models 115/60/1
- Voltage : 60-80 Models 230/60/1  
*(220/50Hz Available as option)*

<b>KGH-ES-30-S</b> \$16,270	<b>KGH-ES-40-S</b> \$17,970	<b>KGH-ES-50-S</b> \$18,750	<b>KGH-ES-60-S</b> \$20,530
<b>KGH-ES-80-S</b> \$25,110	<b>KGH-ES-100-S</b> \$36,300		

All cases come without a cord set or plug



# HYDRA-KOOL 2019 PRICE LIST

## Open Merchandisers Low Profile - KGL-OF Series



- High density CFC-free foamed ends-superior insulation
- LED lighting in canopy & under all shelves
- Slide out condensation unit on S/C for easy maintenance
- Temperature and defrost regulated by a digital controller
- Standard pull-down night shade

<b>KGL-OF-40-S*</b> \$13,520	<b>KGL-OF-50-S</b> \$14,690	<b>KGL-OF-60-S</b> \$15,690
<b>KGL-OF-40-R</b> \$12,290	<b>KGL-OF-50-R</b> \$13,210	<b>KGL-OF-60-R</b> \$14,180

All remote cases come without a cord set or plug      50-S and 60-S Come without a cord set or plug      \* NEMA-5-20P



## Open Merchandisers Low Profile - KGL-RS Series



- Locking back doors for rear loading
- Digital temperature data logger
- LED lighting in canopy and under all shelves
- Temperature and defrost regulated by a digital controller
- Removable condensation evaporative pan for easy cleaning
- Height adjustable shelves can be tilted

RS - Rear doors and electric shutter		RM - Pull down manual locking shutter	
<b>KGL-RS-40-S*</b> \$17,800	<b>KGL-RS-60-S</b> \$20,740	<b>KGL-RM-40-S*</b> \$17,800	<b>KGL-RM-60-S</b> \$20,740
<b>KGL-RS-40-R</b> \$16,950	<b>KGL-RS-60-R</b> \$19,330	<b>KGL-RM-40-R</b> \$16,950	<b>KGL-RM-60-R</b> \$19,330

All remote cases come without a cord set or plug      60-S Come without a cord set or plug      \* NEMA-5-20P



## Over / Under Combination Type Case - KGL-OU Series



- Upper section can be operated as refrigerated OR dry
- Tempered glass, rear sliding doors in upper section
- Open front, front loading lower section
- LED lighting in canopy and under all shelves
- Rear serving shelf
- Temperature and defrost regulated by a digital controller

<b>KGL-OU-36-S*</b> \$17,410	<b>KGL-OU-48-S</b> \$19,730	<b>KGL-OU-60-S</b> \$21,100
---------------------------------	--------------------------------	--------------------------------

48-S and te 60-S Come without a cord set or plug      \* NEMA-5-20P



## Counter Height Grab-n-Go Type Case - KGL-CH Series



- Ideal for placement in popular impulse locations
- Front loading for easy access
- LED lighting in canopy
- Temperature and defrost regulated by a digital controller

<b>KGL-CH-36-S</b> \$12,220	<b>KGL-CH-48-S</b> \$13,130	<b>KGL-CH-60-S</b> \$14,000
--------------------------------	--------------------------------	--------------------------------

- Voltage: 115/60/1  
(220/50Hz Available as option)

NEMA-5-20P  
\*\*Excluding the 60-S



## Gelato Cases KFM-GL Series



- Lift-up tempered front glass
- Rear tempered sliding glass doors
- Full interior fabricated of stainless steel

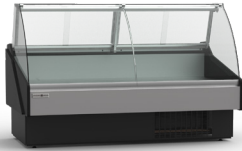
<b>KFM-GL-40-S</b> \$29,160	<b>KFM-GL-60-S</b> \$37,710	<b>KFM-GL-80-S</b> \$52,640
--------------------------------	--------------------------------	--------------------------------

- Voltage : 115/60/1  
(220/50Hz Available as option)

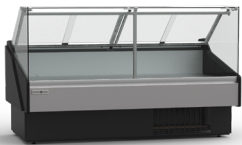
All cases come without a cord set or plug

# HYDRA-KOOL 2019 PRICE LIST

## Deli Cases - Fresh Meats KFM-CG & KFM-FG Series



Standard CG Curved Glass



Optional FG Flat Glass

- Oversized evaporator coil with low velocity fans
- Digital controller
- Tilt forward front tempered glass
- Rear tempered sliding glass doors
- Stainless steel interior
- Pull-out condensation unit
- Anti-condensation system for front glass
- LED canopy lighting

- Voltage: 115/60/1  
*(220/50Hz Available as option)*

When ordering, please specify  
KFM-CG (curved glass) or KFM-FG  
(flat glass)

<b>KFM-CG-40-S*</b> \$12,670	<b>KFM-CG-50-S*</b> \$13,810	<b>KFM-CG-60-S*</b> \$14,660	<b>KFM-CG-80-S*</b> \$17,690
<b>KFM-CG-100-S</b> \$19,570	<b>KFM-CG-120-S</b> \$21,840		

<b>KFM-CG-40-R</b> \$11,780	<b>KFM-CG-50-R</b> \$12,720	<b>KFM-CG-60-R</b> \$13,300	<b>KFM-CG-80-R</b> \$15,770
<b>KFM-CG-100-R</b> \$17,450	<b>KFM-CG-120-R</b> \$19,510		

When ordering, please specify **KFM-CG**  
(curved glass) or **KFM-FG** (flat glass)

All remote cases come  
without a cord set or plug

100-S and 120-S Come  
without a cord set or plug



\* NEMA-5-15P

## Deli-Cases - Fresh Meats KFM-OF Series Open Front



- Oversized evaporator coil with low velocity fans
- Tempered front & side glass
- Stainless steel interior
- Pull-out condensation unit
- Digital controller

- Voltage: 115/60/1  
*(220/50Hz Available as option)*

<b>KFM-OF-40-S*</b> \$11,870	<b>KFM-OF-50-S*</b> \$12,810	<b>KFM-OF-60-S*</b> \$13,400	<b>KFM-OF-80-S*</b> \$15,590
<b>KFM-OF-100-S</b> \$17,210	<b>KFM-OF-120-S</b> \$19,220		

<b>KFM-OF-40-R</b> \$10,980	<b>KFM-OF-50-R</b> \$11,700	<b>KFM-OF-60-R</b> \$12,010	<b>KFM-OF-80-R</b> \$13,680
<b>KFM-OF-100-R</b> \$15,080	<b>KFM-OF-120-R</b> \$16,860		

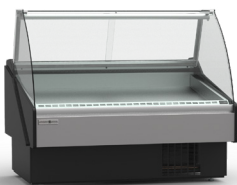
All remote cases come  
without a cord set or plug

100-S and 120-S Come  
without a cord set or plug

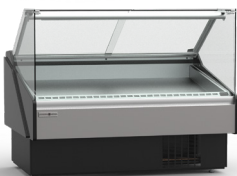


\* NEMA-5-15P

## Seafood Cases KFM-SC & KFM-SF Series



Standard SC Curved Glass



Optional SF Flat Glass

- Oversized evaporator coil with low velocity fans
- Tilt forward front tempered glass
- Rear tempered sliding glass doors
- Stainless steel interior
- Pull-out condensation unit
- Digital controller
- Anti-condensation system for front glass
- LED canopy lighting

- Ice / Fish pans optional  
- Cases require floor drains  
- Voltage: 115/60/1  
*(220/50Hz Available as option)*

<b>KFM-SC-40-S*</b> \$15,190	<b>KFM-SC-50-S*</b> \$16,590	<b>KFM-SC-60-S*</b> \$17,610	<b>KFM-SC-80-S*</b> \$21,220
<b>KFM-SC-100-S</b> \$23,480	<b>KFM-SC-120-S</b> \$26,230		

<b>KFM-SC-40-R</b> \$14,240	<b>KFM-SC-50-R</b> \$15,260	<b>KFM-SC-60-R</b> \$15,960	<b>KFM-SC-80-R</b> \$18,930
<b>KFM-SC-100-R</b> \$20,940	<b>KFM-SC-120-R</b> \$23,390		

When ordering, please specify  
**KFM-SC** (curved glass) or **KFM-SF** (flat glass)

All remote cases come  
without a cord set or plug

100-S and 120-S Come  
without a cord set or plug



\* NEMA-5-15P

# HYDRA-KOOL 2019 PRICE LIST

## Seafood Cases KFM-SO Series



- Oversized evaporator coil with low velocity fans
- Stainless steel interior
- Silver colored PVC coated steel front panel with black steel kick plate
- CFC free injected foam insulation
- Foamed polystyrene black end panels
- Temperature and defrost regulated by a digital controller
- Digital thermometer
- Slide out condensation unit (self contained units only)
- Cases require floor drains
- Ice / fish pans optional
- Voltage: 115/60/1  
*(220/50Hz Available as option)*

<b>KFM-SO-40-S*</b> \$14,240	<b>KFM-SO-50-S*</b> \$15,360	<b>KFM-SO-60-S*</b> \$16,070	<b>KFM-SO-80-S*</b> \$18,690
<b>KFM-SO-100-S</b> \$20,640	<b>KFM-SO-120-S</b> \$23,060		
<b>KFM-SO-40-R</b> \$13,180	<b>KFM-SO-50-R</b> \$14,030	<b>KFM-SO-60-R</b> \$14,430	<b>KFM-SO-80-R</b> \$16,420
<b>KFM-SO-100-R</b> \$18,080	<b>KFM-SO-120-R</b> \$20,230		

All remote cases come without a cord set or plug      100-S and 120-S Come without a cord set or plug



\*NEMA-5-15P

## Deli Cases - Packaged Meats KPM-CG Series



Standard CG Curved Glass



Optional FG Flat Glass

- Tilt forward front tempered glass
- Rear tempered sliding glass doors
- Refrigerated rear storage compartment(s)
- Slide out condensation unit (self contained units only)
- Digital controller
- Anti-condensation system for front glass
- LED canopy lighting
- Voltage: 115/60/1  
*(220/50Hz Available as option)*
- When ordering, please specify KPM-CG (curved glass) or KPM-FG (flat glass)

<b>KPM-CG-60-S</b> \$15,620	<b>KPM-CG-80-S</b> \$17,380	<b>KPM-CG-100-S</b> \$20,170
<b>KPM-CG-60-R</b> \$14,530	<b>KPM-CG-80-R</b> \$15,820	<b>KPM-CG-100-R</b> \$18,310

When ordering, please specify KPM-CG (curved glass) or KPM-FG (flat glass)

All remote cases come without a cord set or plug



NEMA-5-20P

## Deli-Cases - Packaged Meats Open Front - KPM-OF Series



- Tempered front & side glass
- Refrigerated rear storage compartment(s)
- Slide out condensation unit (self contained units only)
- Digital controller
- Voltage: 115/60/1  
*(220/50Hz Available as option)*

<b>KPM-OF-60-S</b> \$14,800	<b>KPM-OF-80-S</b> \$15,340	<b>KPM-OF-100-S</b> \$18,170
<b>KPM-OF-60-R</b> \$13,450	<b>KPM-OF-80-R</b> \$13,770	<b>KPM-OF-100-R</b> \$15,990

All remote cases come without a cord set or plug



NEMA-5-20P

# HYDRA-KOOL 2019 PRICE LIST

## Wall Type Cases KGV Series

- High volume cases in in three distinct models
- LED lighting under canopy and all shelves
- High density CFC-Free foamed ends superior insulation
- LED lighting in all doors

**Voltage: 115/60/1**  
(220/50Hz Available as option)



### Medium Temperature Front Doors Only

<b>KGV-MD-2-S*</b> \$16,300	<b>KGV-MD-2-R</b> \$14,160
<b>KGV-MD-3-S*</b> \$20,050	<b>KGV-MD-3-R</b> \$17,430
<b>KGV-MD-4-S</b> \$31,330	<b>KGV-MD-4-R</b> \$27,250
<b>KGV-MD-5-S</b> \$34,470	<b>KGV-MD-5-R</b> \$29,970
<b>KGV-MD-6-S</b> \$37,600	<b>KGV-MD-6-R</b> \$32,700

### Medium Temperature Front & Rear Doors

<b>KGV-MR-2-S*</b> \$19,930	<b>KGV-MR-2-R</b> \$17,960
<b>KGV-MR-3-S*</b> \$25,840	<b>KGV-MR-3-R</b> \$23,280
<b>KGV-MR-4-S</b> \$38,530	<b>KGV-MR-4-R</b> \$34,710
<b>KGV-MR-5-S</b> \$44,180	<b>KGV-MR-5-R</b> \$39,800
<b>KGV-MR-6-S</b> \$49,640	<b>KGV-MR-6-R</b> \$44,730

### Medium Temperature Open Front - Remote Only

<b>KGV-MO-2-R</b> \$12,980
<b>KGV-MO-3-R</b> \$16,550
<b>KGV-MO-4-R</b> \$23,960
<b>KGV-MO-5-R</b> \$26,770
<b>KGV-MO-6-R</b> \$29,570

## Options For All Models

- Custom color finish – Require Pantone or RAL color - Upcharge of 10%
- Interior of any model in stainless steel finish – Upcharge of 10%
- Exterior front panel of any model in stainless steel finish – Upcharge of 10%

All cases come without a cord set or plug



\* NEMA-5-15P

## Lift-up system of front glass (KFM & KPM Series)

<b>40"</b> \$1,680	<b>50"</b> \$1,750	<b>60"</b> \$1,940	<b>80"</b> \$2,290	<b>100"</b> \$2,370	<b>120"</b> \$2,520
-----------------------	-----------------------	-----------------------	-----------------------	------------------------	------------------------



# HYDRA-KOOL 2019 PRICE LIST

## Accessories

### Adjustable Stainless Steel Legs (Set of 4)

KT001A	ALL KPM - KFM - KGL - KGH - KBD	\$240
--------	---------------------------------	-------

### Locking Casters (Set of 4)

KT002A	ALL KPM - KFM - KGL - KGH - KBD	\$330
KT002B	KGL-RS/RM WITH FULL FRAME	\$1,040

### Joining Kit

KT003A	ALL KPM AND KFM	\$2,360
KT003B	ALL KPM AND KFM OPEN CASES	\$2,360
KT003C	ALL KBD	\$280
KT003D	ALL KGH	\$280
KT003E	ALL KGL	\$280
KT003F	ALL KGV	\$280

### Partition

KT004A	ALL KPM AND KFM	\$1,190
KT004B	ALL KPM AND KFM OPEN CASES	\$810
KT004C	ALL KBD	\$1,270
KT004D	ALL KGH	\$470
KT004E	ALL KGL	\$600
KT004F	ALL KGV	\$380

### Scale Stand With Receptacle

KT005A	ALL KPM AND KFM	\$660
KT005B	ALL KPM AND KFM OPEN CASES	\$660
KT005C	ALL KBD	\$660

### Cutting Board

KT006A	ALL KPM AND KFM	\$880
--------	-----------------	-------

### Utensil Holder

KT007A	ALL KPM AND KFM	\$390
--------	-----------------	-------

### Product Dividers

KT008A	ALL KPM AND KFM	\$170
KT008B	ALL KBD	\$140
KT008C	ALL KGH	\$140
KT008D	ALL KGL	\$140
KT008E	ALL KGV	\$140

### Condensate Evaporative Pans

KT009A	ALL KPM - KFM - KBD	\$1,490
KT009B	ALL KGL AND KGH	\$1,520

### Ice / Fish Pans For Seafood Cases

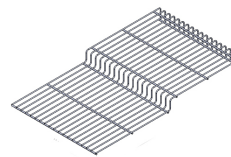
KT-025A	40"	KFM-SC / KFM-SF / KFM-SO	\$920
KT-025B	50"	KFM-SC / KFM-SF / KFM-SO	\$1,110
KT-025C	60"	KFM-SC / KFM-SF / KFM-SO	\$1,330
KT-025D	80"	KFM-SC / KFM-SF / KFM-SO	\$1,860
KT-025E	100"	KFM-SC / KFM-SF / KFM-SO	\$2,250
KT-025F	120"	KFM-SC / KFM-SF / KFM-SO	\$2,660

### Step Racks - Single Level

KT011A	GRAY	KFM - 40	\$260
KT011B	STAINLESS STEEL	KFM - 40	\$450
KT011C	GRAY	KFM - 50	\$380
KT011D	STAINLESS STEEL	KFM - 50	\$660
KT011E	GRAY	KFM AND KPM - 60	\$450
KT011F	STAINLESS STEEL	KFM AND KPM - 60	\$660
KT011G	GRAY	KFM AND KPM - 80	\$500
KT011H	STAINLESS STEEL	KFM AND KPM - 80	\$880
KT011I	GRAY	KFM AND KPM - 100	\$630
KT011J	STAINLESS STEEL	KFM AND KPM - 100	\$1,310
KT011K	GRAY	KFM - 120	\$750
KT011L	STAINLESS STEEL	KFM - 120	\$1,320

### Step Racks - Two Level

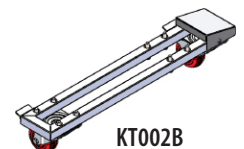
KT012A	GRAY	KFM - 40	\$400
KT012B	STAINLESS STEEL	KFM - 40	\$680
KT012C	GRAY	KFM - 50	\$600
KT012D	STAINLESS STEEL	KFM - 50	\$1,000
KT012E	GRAY	KFM AND KPM - 60	\$660
KT012F	STAINLESS STEEL	KFM AND KPM - 60	\$1,060
KT012G	GRAY	KFM AND KPM - 80	\$800
KT012H	STAINLESS STEEL	KFM AND KPM - 80	\$1,340
KT012I	GRAY	KFM AND KPM - 100	\$1,190
KT012J	STAINLESS STEEL	KFM AND KPM - 100	\$2,010
KT012K	GRAY	KFM - 120	\$1,310
KT012L	STAINLESS STEEL	KFM - 120	\$2,120



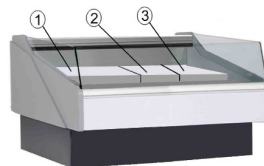
Wire Racks



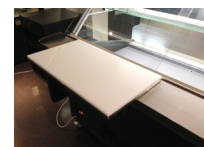
Casters



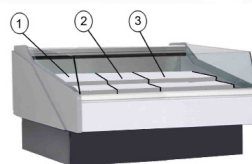
KT002B



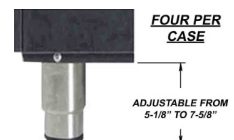
Example of Step Shams (Level 1)



Cutting Board



Example of Step Shams (Level 2)



# HYDRA-KOOL 2019 PRICE LIST

## Terms & Conditions

**SHIPMENT:** Plattsburgh NY 12903

**SHIPPING CLASS:** 150 - Insured Cargo FOB Plattsburgh, NY

**TERMS:** 2%-10 days OR Net 30 days upon approved credit. All Remote, Flat Glass, KFM-OF, KPM-OF, KGH-SO, Gelato, Seafood, KGV and Custom cases are available by Special Order and require a 25% non-refundable deposit.

**RETURN:** All returns are subject to a minimum of 35% restocking fee. \*\* All merchandise must have a return merchandise authorization (RMA) issued by MVP Group LLC \*\*. Units must have original packaging, and never have been connected to a utility and in a resellable condition.

**PRICING:** All prices shown are list. MVP Group LLC assumes no responsibility for carrier rates or charges, nor will it make any allowance for prices from freight charges. Prices are subject to change without any notice, and as exist at time of shipment. Export duties and overseas shipping costs not included in prices listed.

**DAMAGES:** Merchandise must be inspected prior to the carrier leaving your premises. Damage must be noted in writing on the BOL and pictures must be taken at this time.  
- For any goods shipped prepaid by MVP Group LLC, and the goods are damaged and/or lost in transit, please call the Logistics Department at MVP Group LLC immediately (1-888-275-4538 x 333).

- MVP Group LLC will not be held responsible for damages that are not notated on the BOL or not reported within 5 business days of being delivered.

- For goods shipped via 3rd party carrier, any claim for damages or loss must be made by the consignee directly with the carrier. MVP Group LLC assumes no responsibility for damage or loss while in transit.

**SHIPMENT:** Whenever feasible, preferred carrier will be used, however we reserve to the right to ship via any responsible carrier. Rate charges or discrepancies are between carrier and consignee. Returns are not acceptable unless authorized by the corporate head office, in writing, and an RMA is issued.

These conditions are the terms upon which an order is accepted and constitutes an Agreement of Sales. MVP Group LLC assumes no responsibility for the product when misused, abused, or incorrectly applied. In any such instance, the warranty becomes null and void.

## One Year Parts & Labor Warranty\*

MVP Group LLC (HYDRA-KOOL) warrants to the original purchaser of every new HYDRA-KOOL refrigerated unit to be free from defects in material or workmanship, under normal and proper use and maintenance service as specified by MVP Group LLC and upon proper installation and start-up in accordance with the instruction packet supplied with each unit. MVP Group LLC obligation under this warranty is limited to a period of one (1) year from the date of original installation.

Any original part covered under this warranty that are determined by MVP Group LLC to have been defective within one (1) year of original installation shall be limited to the repair or replacement, including the labor charge for defective parts or assemblies. The labor warranty shall include standard straight time labor charges only and reasonable travel time, as determined by MVP Group LLC.

Warranty shall not cover standard wear and tear parts which include door gaskets, incandescent bulbs, LED lamps, or fluorescent bulbs. Warranty also does not cover issues caused by improper installation or lack of basic preventative maintenance which includes, but not limited to regular cleaning of condenser coils.

## Additional Four Year Compressor Warranty

In addition to the one (1) year warranty stated above, MVP Group LLC hereby warrants its hermetically and semi-hermetically sealed compressors to be free from defects in both material and workmanship under normal and proper use and maintenance service for a period of four (4) additional years from the date of original installation, but shall at no times exceed five (5) years after shipment from the manufacturer.

Compressors determined by MVP Group LLC to have been defective within this extended time period will, at MVP Group LLC option, be either repaired or replaced with a compressor or compressor parts of a similar capacity.

The four (4) year extended compressor warranty applies only to hermetically and semi-hermetically sealed parts of the compressor and does not apply to any other parts or components, including, but not limited to: cabinet, paint finish, temperature control, refrigerant, metering device, driers, motor starting equipment, fan assembly or any other electrical component, etc.

\*RESIDENTIAL APPLICATIONS: MVP Group LLC. assumes no responsibility nor liability for any parts, or labor coverage for component failure, or other damage resulting from installation in residential or non-commercial applications.

This part and labor warranty is the sole warranty policy offered by MVP Group LLC. MVP Group LLC sole obligation under this warranty is limited to either repair or replacement of parts and is subject to the limitations listed below.

1. MVP Group LLC will bear no responsibility or liability for any equipment which has been misapplied, mishandled, misused, subjected to harsh chemical action, or external causes such as the use of extension cords, electrical power fluctuations, lack of proper maintenance, non-factory approved revisions or modifications, or equipment damaged by fire, flood, or other acts of God.

2. MVP Group LLC will bear no responsibility for consequential loss or damages such as, including but not limited to, economic loss, profit loss, personal injury, property damage, damage during transit, losses or damages arising from food or product spoilage claims.


3. MVP Group LLC shall bear no responsibility for parts or labor coverage for component failure or other damages resulting from improper usage, installation, or maintenance as described in the owner's manual.

4. Exceptions to 1 (1) year part warranty other than additional four (4) year compressor warranty: Light bulbs and door gaskets are limited to 90 day warranty period, parts only.

5. MVP Group LLC equipment is intended for commercial use only and this warranty is void if the equipment is installed in other than commercial applications.

6. All other warranties, either express or implied, arising under law or equity or custom of the trade, including but not limited to, warranties or merchantability or fitness for a particular purpose, are excluded. MVP Group LLC's liability on any claim, including but not limited to negligence, shall not exceed the price of the equipment that gives rise to the claim. HYDRA-KOOL is a registered trademark of MVP Group LLC.



 **786-600-4687**  
TOLL FREE: **844-218-8477**  
FAX: **786-661-4100**

12000 BISCAYNE BLVD, SUITE #108, MIAMI, FL, USA 33181  
MVPGROUPCORP.COM SALES@MVPGROUPCORP.COM