

SIERRA range



FEBRUARY 1, 2020
PRICE LIST



 786-600-4687

TOLL FREE: 844-218-8477

FAX: 786-661-4100

 MVPGROUPCORP.COM

 SALES@MVPGROUPCORP.COM



Printed February 2020

**FEBRUARY 1, 2020
PRICE LIST**



SRF-25/25

SRF-35/40



SRF-40/50

SRF-75/80

2 YEAR TANK WARRANTY

Full unit replacement. See conditions on back.

GAS FRYERS

SRF-25/25

(4) 30,000 BTU burners, 2 x 25 lbs. capacity, s/s, galvanized back, 6" adjustable legs

SRF-35/40

(3) 30,000 BTU burners, 35-40 lbs. capacity, s/s, galvanized sides & back, 6" adjustable legs

SRF-40/50

(3) 38,000 BTU burners, 40-50 lbs. capacity, s/s, galvanized back, 6" adjustable legs

SRF-SC-40/50

(4) 30,000 BTU burners, 40-50 lbs. capacity, all s/s cabinet, 6" adjustable legs

SRF-75/80

(5) 30,000 BTU burners, 75-80 lbs. capacity, s/s, galvanized sides & back, 6" adjustable legs

SRF-SC-75/80

(5) 30,000 BTU burners, 75-80 lbs. capacity, all s/s cabinet, 6" adjustable legs

BTU	SHIP WT.	LIST PRICE
120,000	190 lbs	\$3,820
90,000	150 lbs	\$1,490
114,000	167 lbs	\$1,830
120,000	158 lbs	\$2,950
150,000	265 lbs	\$2,400
150,000	265 lbs	\$3,460

GAS RANGES



SR-4-24

BTU	SHIP WT.	LIST PRICE
152,000	309 lbs	\$2,820

(4) 30,000 BTU heavy duty cast iron burners, 32,000 BTU oven burner, s/s galvanized back



SR-6-36

BTU	SHIP WT.	LIST PRICE
212,000	410 lbs	\$2,980

(6) 30,000 BTU heavy duty cast iron burners, 32,000 BTU oven burner, s/s galvanized back



SR-10-60

BTU	SHIP WT.	LIST PRICE
364,000	725 lbs	\$6,480

(10) 30,000 BTU heavy duty cast iron burners, (2) 32,000 BTU oven burners, s/s galvanized back



SR-4B-24G-48

BTU	SHIP WT.	LIST PRICE
223,000	668 lbs	\$7,120

(4) 30,000 BTU heavy duty iron cast burners, 39,000 BTU 24" griddle, (2) 32,000 BTU oven burners, s/s galvanized back



SR-4B-36G-60

BTU	SHIP WT.	LIST PRICE
246,000	837 lbs	\$7,330

(4) 30,000 BTU heavy duty iron cast burners, 62,000 BTU 36" griddle, (2) 32,000 BTU oven burners, s/s galvanized back



SR-6B-24G-60

BTU	SHIP WT.	LIST PRICE
283,000	772 lbs	\$7,330

(6) 30,000 BTU heavy duty iron cast burners, 39,000 BTU 24" griddle, (2) 32,000 BTU oven burners, s/s galvanized back



SR-6B-24RG-60

BTU	SHIP WT.	LIST PRICE
290,000	775 lbs	\$8,010

(6) 30,000 BTU heavy duty iron cast burners, 46,000 BTU 24" raised griddle/broiler, (2) 32,000 BTU oven burners, s/s galvanized back

**FEBRUARY 1, 2020
PRICE LIST**



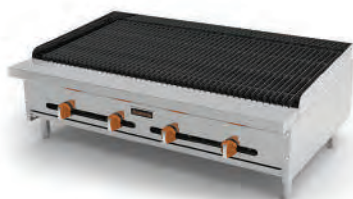
SRSP-18

STOCK POT RANGE

SRSP-18

18" wide, (1) heavy duty cast iron burner, manual control with pilot, s/s exterior, galvanized back, 6" adjustable legs

BTU	SHIP WT.	LIST PRICE
100,000	128 lbs	\$1,180



SRCB-48

CHAR ROCK BROILERS

SRCB-24

24" wide, (2) "H" burners, cast iron grates, manual control, s/s exterior, galvanized back, crumb tray

BTU	SHIP WT.	LIST PRICE
64,000	172 lbs	\$1,710

SRCB-36

36" wide, (3) "H" burners, cast iron grates, manual control, s/s exterior, galvanized back, crumb tray

96,000	249 lbs	\$2,270
--------	---------	---------

SRCB-48

48" wide, (4) steel "H" burners, cast iron grates, manual control, s/s exterior, galvanized back, crumb tray

128,000	296 lbs	\$2,990
---------	---------	---------

RADIANT BROILERS

SRRB-12

12" wide, (1) "U" shaped burner, cast iron grates, manual control, s/s exterior, galvanized back, crumb tray

BTU	SHIP WT.	LIST PRICE
16,000	125 lbs	\$1,130

SRRB-24

24" wide, (4) steel "flu ed" burners, cast iron grates, manual control, s/s exterior, galvanized back, crumb tray

64,000	170 lbs	\$1,720
--------	---------	---------

SRRB-36

36" wide, (6) steel "flu ed" burners, cast iron grates, manual control, s/s exterior, galvanized back, crumb tray

96,000	249 lbs	\$2,370
--------	---------	---------

SRRB-48

48" wide, (8) steel "flu ed" burners, cast iron grates, manual control, s/s exterior, galvanized back, crumb tray

128,000	296 lbs	\$3,130
---------	---------	---------



SRRB-60

60" wide, (10) steel "fluted" burners, cast iron grates, manual control, s/s exterior, galvanized back, crumb tray

160,000	454 lbs	\$3,990
---------	---------	---------

MANUAL GRIDDLES

SRMG-12

12" wide, 5/8" thick steel griddle plate, (1) "U" shaped burner, manual control, s/s exterior, galvanized back, 4" grease trough

BTU	SHIP WT.	LIST PRICE
23,000	125 lbs	\$1,090

SRMG-24

24" wide, 3/4" thick steel griddle plate, (2) "U" shaped burners, manual controls, s/s exterior, galvanized back, 4" grease trough

46,000	174 lbs	\$1,620
--------	---------	---------

SRMG-36

36" wide, 3/4" thick steel griddle plate, (3) "U" shaped burners, manual controls, s/s exterior, galvanized back, 4" grease trough

69,000	252 lbs	\$2,090
--------	---------	---------

SRMG-48

48" wide, 3/4" thick steel griddle plate, (4) "U" shaped burners, manual controls, s/s exterior, galvanized back, 4" grease trough

92,000	314 lbs	\$2,840
--------	---------	---------

THERMOSTAT GRIDDLES

SRTG-24

24" wide, 1" thick steel griddle plate, (2) "U" shaped burners, thermostat controls, s/s exterior, galvanized back, 4" grease trough

BTU	SHIP WT.	LIST PRICE
60,000	178 lbs	\$2,290

SRTG-36

36" wide, 1" thick steel griddle plate, (3) "U" shaped burners, thermostat controls, s/s exterior, galvanized back, 4" grease trough

90,000	252 lbs	\$3,260
--------	---------	---------

SRTG-48

48" wide, 1" thick steel griddle plate, (4) "U" shaped burners, thermostat controls, s/s exterior, galvanized back, 4" grease trough

120,000	324 lbs	\$3,970
---------	---------	---------

SRTG-60

60" wide, 1" thick steel griddle plate, (5) "U" shaped burners, thermostat controls, s/s exterior, galvanized back, 4" grease trough

150,000	428 lbs	\$5,030
---------	---------	---------



SRMG-36



SRTG-24

FEBRUARY 1, 2020
PRICE LIST



**COMING
 IN APRIL**



SRTG-36E

THERMOSTAT GRIDDLES - ELECTRIC

	POWER		SHIP WT.	LIST PRICE
	208V	240V		
SRTG-12E 12" wide, 1" thick steel griddle plate, (1) 4000 watt element, thermostat controls, s/s exterior, galvanized back, 4" grease trough	3.0KW	4.0KW	125 lbs	\$1,190
SRTG-24E 24" wide, 1" thick steel griddle plate, (2) 4000 watt elements, thermostat controls, s/s exterior, galvanized back, 4" grease trough	6.0KW	8.0KW	235 lbs	\$1,750
SRTG-36E 36" wide, 1 thick steel griddle plate, (3) 4000 watt elements thermostat controls, s/s exterior, galvanized back, 4" grease trough	9.0KW	12.0KW	335 lbs	\$2,320
SRTG-48E 60" wide, 1" thick steel griddle plate, (4) 4000 watt elements thermostat controls, s/s exterior, galvanized back, 4" grease trough	12.0KW	16.0KW	440 lbs	\$2,970



SRHP-4-24

HOT PLATES

	BTU	SHIP WT.	LIST PRICE
SRHP-2-12 12" wide, (2) 30,000 BTU, lift top piece cast iron burners, manual control w/ pilot ignition, s/s exterior, galvanized back	60,000	93 lbs	\$870
SRHP-4-24 24" wide, (4) 30,000 BTU, lift top piece cast iron burners, manual control w/ pilot ignition, s/s exterior, galvanized back	120,000	152 lbs	\$1,350
SRHP-6-36 36" wide, (6) 30,000 BTU, lift top piece cast iron burners, manual control w/ pilot ignition, s/s exterior, galvanized back	180,000	214 lbs	\$1,970



SRS-24

SALAMANDERS

	BTU	SHIP WT.	LIST PRICE
SRS-24 24" wide, (1) infrared tile burner, manual control with pilot, chrome plated rack assembly, 4 rack adjustable positions, s/s exterior, galvanized back, wall mount kit included	20,000	99 lbs	\$2,550
SRS-36 36" wide, (2) infrared tile burners, manual control with pilot, chrome plated rack assembly, 4 rack adjustable positions, s/s exterior, galvanized back, wall mount kit included	40,000	135 lbs	\$3,290



SRCM-24

CHEESEMELTERS

	BTU	SHIP WT.	LIST PRICE
SRCM-24 24" wide, (1) infrared tile burner, manual control with pilot ignition, (1) rack with three adjustable rack positions, s/s exterior, galvanized back, wall mount kit included	20,000	68 lbs	\$1,880
SRCM-36 36" wide, (2) infrared tile burners, manual control with pilot ignition, (1) rack with three adjustable rack positions, s/s exterior, galvanized back, wall mount kit included	40,000	106 lbs	\$2,560



Volare

GAS-FIRED PIZZA OVEN

BTU	SHIP WT.	LIST PRICE
90,000	650 lbs	\$42,780

WITH DUAL ROTATING CERAMIC DECKS AND INDIVIDUAL TEMPERATURE CONTROLS

- Stainless steel construction
- 2 tempered glass doors for easy access
- Cooks food directly on the ceramic decks
- Temperature adjustable up to 650°F
- Stainless steel base with under-shelf

COOKS UP TO 160 12" PIES PER HOUR

ELECTRIC COUNTER-TOP PIZZA OVEN

GAS COUNTER-TOP PIZZA OVEN

FULL SIZE DECK OVENS



SRPO-24E

Designed for pizza, flat breads and bakery products baked directly on the hearth deck, screens, pans or baking sheets. Voltage: 220-240/60Hz/1

POWER	SHIP WT.	LIST PRICE
3.6 KW	205 lbs	\$2,820



SRPO-24G

24" wide, Meteorite™ pizza decks, temp adjustable from 300°F to 650°F.

SHIP WT.	LIST PRICE
282 lbs	\$3,670

SRPO-36G

36" wide, Meteorite™ pizza decks, temp adjustable from 300°F to 650°F.

SHIP WT.	LIST PRICE
351 lbs	\$4,130



NEW

	LIST PRICE
SRPO-48G	\$12,680
SRPO-48G-2	\$25,360
SRPO-60G	\$14,440
SRPO-60G-2	\$28,880
SRPO-72G	\$15,830
SRPO-72G-2	\$31,660

SRCO-2
(Pictured here)



SRCO

S/S construction, porcelain enamel interior, S/S inshot burners.

GAS	SRCO	BTU	SHIP WT.	LIST PRICE
			54,000	617 lbs
ELECTRIC	SRCO-2	BTU	SHIP WT.	LIST PRICE
		108,000	1,234 lbs	\$11,160

SRCO
(Pictured here)



SRCO-E

S/S construction, porcelain enamel interior, Electronic ignition. Power: 10Kw/208V/60Hz/3 phase

ELECTRIC	SRCO-E	POWER	SHIP WT.	LIST PRICE
			10 KW	560 lbs
ELECTRIC	SRCO-2E	POWER	SHIP WT.	LIST PRICE
		20 KW	1,120 lbs	\$10,530

FEBRUARY 1, 2020
PRICE LIST



PIZZA CONVEYOR OVENS ELECTRIC & GAS



**THERMALLY INSULATED
 FOR ENERGY EFFICIENCY**

COOK TIME FROM 1 - 20 MINUTES

The Sierra Range conveyor ovens are ideal for a variety of cooking applications including pizzas, calzones, baked dishes, omelettes, chicken wings, pre-cooked meats, cookies, pies, pita breads, bakery products, nachos, hot submarine sandwiches, and many Mexican specialty dishes.



C1830E C1830G

POWER	BTU	SHIP WT.	LIST PRICE
9.9 KW	50,000	360 lbs	\$19,680

C1840E C1840G

POWER	BTU	SHIP WT.	LIST PRICE
13.5 KW	60,000	425 lbs	\$21,870



C3236E C3236G

POWER	BTU	SHIP WT.	LIST PRICE
27.0 KW	120,000	950 lbs	\$24,830

C3248E C3248G

POWER	BTU	SHIP WT.	LIST PRICE
40.5 KW	140,000	1,050 lbs	\$30,950

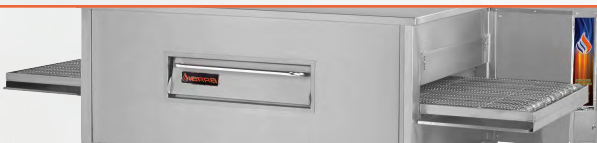


C3260E C3260G

POWER	BTU	SHIP WT.	LIST PRICE
40.5 KW	160,000	1,090 lbs	\$35,660

- 🔥 High velocity precision targeted air flow distribution panels for consistent repeatable baking results.
- 🔥 Stackable (up to 2 units high).
- 🔥 Removable front panel, crumb tray, top and bottom air flow distribution panels for easy cleaning.
- 🔥 Legs with locking casters (17", 23" or 29" available)
- 🔥 30"-36"-40"-48"-60" conveyor belt.
- 🔥 Stainless Steel Construction.
- 🔥 Front mount controls for easy view and access.
- 🔥 Electronic temperature control with digital read-out.
- 🔥 Variable digital speed control on conveyor belt.
- 🔥 Cook time from 1 - 20 minutes.
- 🔥 Reversible conveyor belt direction.
- 🔥 Thermally insulated for energy efficiency.

FEBRUARY 1, 2020 PRICE LIST



ACCESSORIES

FRYER ACCESSORIES	SRF-25/25	SRF-40/50	SRF35/40	SRF-SC-40/50	SRF-75/80	SRF-SC-75/80
BASKET	109-0192 – \$80		119-0002 – \$90		119-0025 – \$140	
TANK COVER	N/A	109-0623 – \$70	119-0027 – \$80		119-0028 – \$90	
CLEANING TOOL SET	119-0032 – \$130					
JOINING STRIP	109-0185 – \$60		119-0029 – \$50		119-0030 – \$50	
CASTERS - SET OF 4	108-WK5B – \$180		119-0021 – \$360			

GAS RANGE ACCESSORIES	
CASTERS - SET OF 4	108-WK5B – \$180
CASTERS - SET OF 6	108-WK5C – \$220
OVEN RACK 24"	109-0197 – \$160
OVEN RACK 36"	109-0040 - \$180

SRCO AND SRCO-E OVEN	
LEGS & CASTERS KIT	118-SRCOLK – \$480
STACKING KIT	118-SRCOSK – \$700
BULLET-FOOT - SET OF 4	18-SRCOBF – \$70
CASTERS - SET OF 4	118-SRCOCR – \$120
OVEN RACK	119-0094 – \$260

RANGE MOUNT KITS	
24"	08-RMK24 – \$200
36"	108-RMK36 – \$260
48"	08-RMK48 – \$340
60"	108-RMK60 – \$420

OVEN RACK 24" COMBO UNITS	109-0465 – \$120
----------------------------------	------------------

COUNTERTOP EQUIPMENT ACCESSORIES	4" LEGS - SET OF 4	09-0332 – \$150
---	--------------------	-----------------

SRPO OVEN	SRPO-24G AND SRPO-24E	SRPO-36G
HEARTH DECK	108-STO24 – \$450	108-STO36 – \$730
OVEN RACK	108-POR24 – \$60	108-POR36 – \$ 70

EQUIPMENT STANDS		
ES-3024 - \$290	ES-3036 - \$340	ES-3048 - \$400
ES-3060 - \$460	ES-3072 - \$530	

TERMS & CONDITIONS

SHIPMENT: F.O.B. Warehouse – Dallas, TX 75244 | Miami, FL 33055 | Carteret, NJ 07008 – Free Freight with min. order of \$10,000 NET (max. 30% of order for Fryers & Ranges). Deck & Conveyor Ovens - FOB Warehouse Plattsburgh, NY 12903.

SHIPPING CLASS: 100 for all Gas Fryers and Gas Ranges, 92 for all counter equipment, 110 for Pizza ovens and convection ovens.

TERMS: 2% -10 days OR Net 30 days on approved accounts only.

RETURNS: All returns are subject to a minimum of 35% restocking fee. ** All merchandise must have a return authorization (RMA) issued by MVP Group LLC.

Units must have original packaging, and never have been connected to a utility and in a resellable condition.

PRICING: All prices shown are list. MVP Group LLC assumes no responsibility for carrier rates or charges, nor will it make any allowance for prices from freight charges. Prices are subject to change without any notice, and as exist at time of shipment. Export duties and overseas shipping costs not included in prices listed.

DAMAGES: Merchandise must be inspected prior to the carrier leaving your premises. Damage must be noted in writing on the BOL and pictures must be taken at this time.

- For any goods shipped prepaid by MVP Group LLC, and the goods are damaged and/or lost in transit, please call the Logistics Department at MVP Group LLC immediately (1-888-275-4538 x 333).
- MVP Group LLC will not be held responsible for damages that are not notated on the BOL or not reported within 5 business days of being delivered.
- For goods shipped via 3rd party carrier, any claim for damages or loss must be made by the consignee directly with the carrier. MVP Group LLC assumes no responsibility for damage or loss while in transit.

SHIPMENT: Whenever feasible, preferred carrier will be used, however we reserve to the right to ship via any responsible carrier. Rate charges or discrepancies are between carrier and consignee. Returns are not acceptable unless authorized by the factory main office, in writing and RMA is issued.

These conditions are the terms upon which an order is accepted and constitutes an Agreement of Sales. MVP Group LLC assumes no responsibility for the product when misused, abused, or incorrectly applied. In any such instance, the warranty becomes null and void.



MANUFACTURERS LIMITED WARRANTY*

MVP Group LLC, (Sierra Range, hereby referred to as "Sierra"), warrants all new cooking equipment bearing the name "SIERRA" and installed within the continental United States of America* or Canada to be free from defects in material or workmanship, under normal and regular usage and operation for a period of one (1) year following the date of original installation, but in no event can exceed eighteen (18) months from the date of shipment from the factory, unless specified otherwise.

If a defect in material(s) or workmanship is detected, or found to exist within the stated period above, MVP Group LLC, at its sole discretion, shall either repair or replace any original part which has proven to fail within the machine, providing that the equipment has not been altered or tampered with in any manner, has been installed correctly as per the owner's manual, and has been maintained and operated in complete accordance with this manual.

The labor cost to repair or replace any part proven to be defective, as per above clause(s), shall be covered by MVP Group LLC, within the United States of America* or Canada; provided that: prior authorization for this labor was pre-approved by MVP Group LLC, the service work was performed by an authorized MVP Group LLC service agent; and that this agent installed an original and genuine Sierra part in the machine. Any repair work performed by a non-authorized service agent remains the sole responsibility of the user, and MVP Group LLC will not be held responsible. The installation of any generic part will not be valid; and therefore voids this warranty. All authorized labor coverage shall be limited to regular hourly rates only. Any supplemental hourly rates or charges, such as weekends or emergency premiums, remain the responsibility of the user.

MVP Group LLC (Sierra) hereby states that: warranty travel time shall be limited to, and without exception, a round-trip total of two (2) hours OR mileage up to a maximum of one hundred (100) miles round-trip. Any charges exceeding those stated herein must have prior authorization by the factory.

A special warranty covers the SRF series. These units carry the regular one (1) year parts and labor plus an additional fry tank warranty to the original end user only; if the fry tank leaks within the first two (2) years of operation due to a manufacturing

defect, as confirmed by an MVP Group LLC authorized service agent, MVP Group LLC shall replace the fryer in its entirety. Any associated freight and/or installation charges shall not be included with the replacement.

Exceptions to above warranty are: (A) Damages resulting from shipping, handling or abuse. (B) Incorrect installation and/or connections. (C) Adjustments or calibration of any thermostats or timers. (D) Faults due to lack of regular maintenance or cleaning of any internal or external part(s). (E) Replacement of any wearable items such as: baskets, grills, knobs, etc. (F) Excessive soot accumulation due to poor gas conditions. (G) Poor results due to: excessive or inadequate temperature(s) or gas pressure conditions (H) Failure to follow manual's lighting instructions, maintenance and/or usage.


MVP GROUP LLC STATES THAT THERE ARE NO OTHER WARRANTIES, EXPRESSED OR IMPLIED, THAT ARE NOT SET FORTH HEREIN. MVP GROUP LLC SHALL ASSUME NO OTHER RESPONSIBILITY, EITHER DIRECT OR NON-DIRECT, OR BE LIABLE FOR ANY OTHER ADDITIONAL LOSS OR DAMAGE, WHETHER DIRECT OR CONSEQUENTIAL, AS A RESULT OF ITS EQUIPMENT.

*Some exceptions apply. The manufacturer reserves the right to alter design and specifications without notice.

*RESIDENTIAL APPLICATIONS: MVP Group LLC assumes no responsibility nor liability for any parts, or labor coverage for component failure, or other damage resulting from installation in residential or non-commercial applications.

"Sierra Range" is a registered trademark of MVP Group LLC.



 786-600-4687
TOLL FREE: 844-218-8477
FAX: 786-661-4100

12000 BISCAYNE BLVD, SUITE #108, MIAMI, FL, USA 33181
MVPGROUPCORP.COM SALES@MVPGROUPCORP.COM

